

G r o m m e t s / M o u n t s

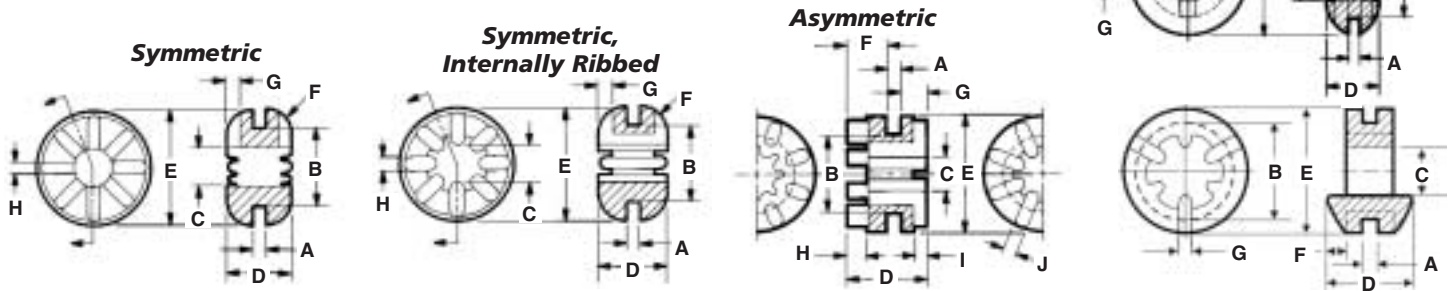
The interrelated dynamics of multiple motors, fans or blowers, actuators and other mechanisms inside OEM and transportation equipment can present problems that prove nearly impossible to define precisely. And product designers also must consider noise control, not to mention unpredictable vibration and shock inputs from external sources.



That process has been simplified, though, with a broad line of standard isolators and mounts molded from proprietary, highly damped ISODAMP, VersaDamp and ISOLOSS elastomers. With numerous configurations and materials formulations available, E-A-R isolators offer extensive design flexibility. Custom-engineered isolators, plus the versatility of VersaDamp TPE (thermo-plastic elastomer) materials with selectable damping and durometer—expand the options even further. (See page 14.)

E-A-R mounts can provide shock control for computer disk drives, meeting demanding space constraints of even miniature and sub-miniature drives. They also control noise, vibration, shock and motion in computer printers and peripherals, and in precision equipment of all types, including medical, office and laboratory equipment.

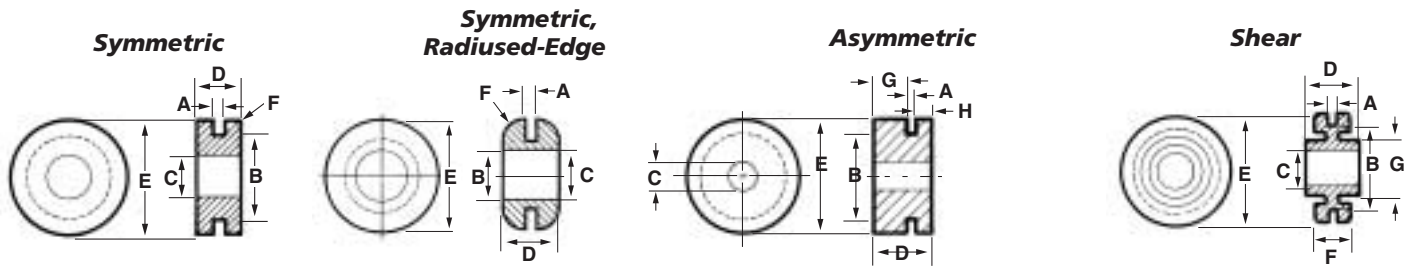
- Provide high performance energy control in minimum sway space
- Variety of formulations, engineered to perform in discrete temperature ranges
- Soft and pliable yet physically strong
- Excellent physical integrity



Family	Product	Load (lbs)	Dimensions (inches)								
			A Plate Thckns.	B Hole Diam.	C Inside Diam.	D Overall Height	E Outside Diam.	F Edge Radius	G Rib Height	H Rib Width	
ISODAMP / VersaDamp	RIBBED GROMMETS Symmetric	G-401	6.0	.063	.375	.224	.313	.563	.125	.063	.063
		G-402	6.0	.125	.375	.226	.375	.563	.125	.063	.063
		G-403	6.0	.063	.375	.276	.313	.625	.125	.063	.063
		G-404	6.0	.125	.375	.281	.375	.625	.125	.063	.063
	Symmetric, Internally Ribbed	G-410	3.0	.057	.250	.158	.230	.379	.050	.040	.050
		G-411	6.0	.063	.375	.188	.323	.563	.130	.063	.063
Asymmetric	G-412	3.0	.031	.250	.158	.230	.379	.050	.040	.050	
	G-414	6.0	.043	.375	.188	.323	.563	.130	.063	.063	
Asymmetric	G-430	5.0	.055	.375	.180	.395	.560	.210/.130	.100/.065	.062	
	G-431	8.0	.055	.560	.172	.390	.750	.210/.125	.100/.065	.062	
Symmetric, Low-Load	G-427	1.5	.049	.312	.180	.194	.440	.025	.056		
	G-461	0.3	.037	.298	.157	.271	.393	.063	.051		
	G-462	0.3	.047	.304	.153	.276	.393	.063	.051		

For C-1002 material, indicate "-1" after part number (e.g. G-401-1)
 For C-1105 material, indicate "-2" after the part number (e.g. G-401-2)
 For C-1100 material, indicate "-3" after the part number (e.g. G-401-3)
 For C-8002 material, indicate "-8" after the part number (e.g. G-401-8)
 For VersaDamp material, indicate "-formulation number" after the part number (e.g. G-401-2325)
 Dimensions given here are nominal. Exact specification print available on request.

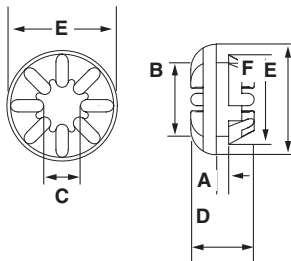
	C-1002	C-1105	C-1100	C-8002	VersaDamp
Grommet Color	Blue	Turquoise	Yellow	Sky Blue	Black
Peak Performance Temp. Range at 1000 Hz	55F-105F (13C-41C)	80F-130F (27C-54C)	95F-145F (35C-63C)	62F-105F (17C-41C)	-40F-122F (-40C-50C)



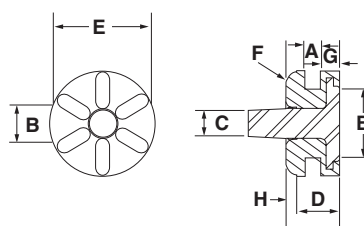
Family	Product	Load (lbs)	Dimensions (inches)								
			A Plate Thckns.	B Hole Diam.	C Inside Diam.	D Overall Height	E Outside Diam.	F Edge Radius	G Lg. Flg. Height	H Sm. Flg. Height	
ISODAMP/VersaDamp	NON-RIBBED GROMMETS Symmetric	G-501	17.0	.060	.360	.187	.120	.500	n/a	n/a	n/a
		G-502	17.0	.063	.338	.182	.182	.500	n/a	n/a	n/a
		G-503	10.0	.054	.244	.190	.306	.385	.020	n/a	n/a
		G-504	13.0	.063	.309	.183	.187	.437	n/a	n/a	n/a
		G-505	17.0	.062	.375	.190	.175	.500	n/a	n/a	n/a
		G-506	14.0	.043	.319	.177	.220	.460	.020	n/a	n/a
		G-507	40.0	.070	.503	.277	.396	.751	.050	n/a	n/a
	Sym., Radiused-Edge	G-521	25.0	.062	.375	.270	.325	.625	.125	n/a	n/a
	Asymmetric	G-511	40.0	.063	.562	.180	.395	.753	n/a	.214	.118
		G-512	26.0	.115	.437	.245	.620	.625	n/a	.380	.125
		G-513	40.0	.078	.500	.304	.500	.750	n/a	.290	.132

			A Plate Thckns.	B Hole Diam.	C Inside Diam.	D Overall Height	E Outside Diam.	F Flange Thckns.	G Boss Out. Diam.	—
Shear	G-601	2.0	.056	.560	.248	.375	.750	.235	.375	—

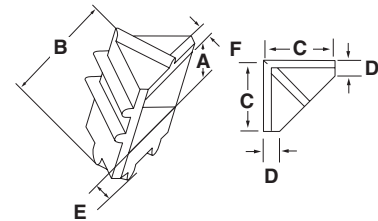
Plug Grommet



Pin Grommet



Corner Bumper



Family	Product	Dimensions (inches)					
		A Plate Thckns.	B Hole Diam.	C Inside Diam.	D Overall Height	E Outside Diam.	F Snap-fit Diam.
ISODAMP/VersaDamp	P-410	.057	.250	.158	.255	.379	.344
	P-411	.063	.395	.188	.323	.563	.457
	P-415	.039	.250	.158	.255	.379	.365

Dimensions (mm)

		A Plate Thckns.	B Hole Diam.	C Pin Diam.	D Grommet Height	E Outside Diam.	F Edge radius.	G Lg Flg. Height	H Sm Flg. Height
PIN GROMMETS	PG-101	1.5	6.4	2.5	5.0	9.8	1.27	1.75	1.75

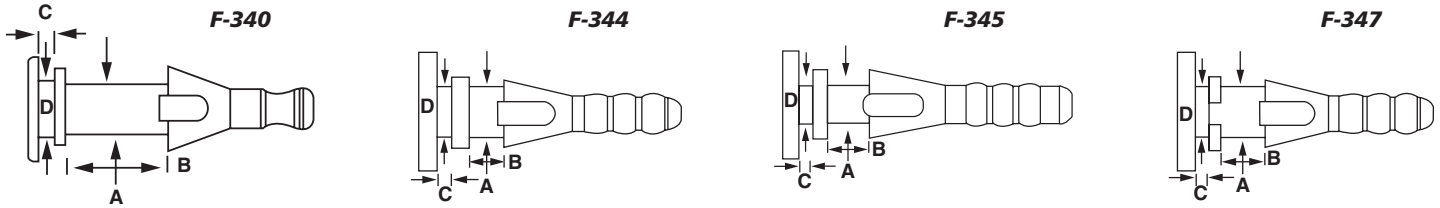
Dimensions (mm)

		A Drive Thckns.	B Bumper Height	C Bumper Length	D Side Wall Thckns.	E Bottom Wall Thckns.	F Top Wall Thckns.
CORNER BUMPER	CB-100	5.0	9.75	6.00	1.5	1.5	3.25
	CB-101	5.0	8.00	6.75	1.5	1.5	1.50

For C-1002 material, indicate "-1" after part number (e.g. G-401-1)
 For C-1105 material, indicate "-2" after the part number (e.g. G-401-2)
 For C-1100 material, indicate "-3" after the part number (e.g. G-401-3)
 For C-8002 material, indicate "-8" after the part number (e.g. G-401-8)
 For VersaDamp material, indicate "-formulation number" after the part number (e.g. G-401-2325)
 Dimensions given here are nominal. Exact specification print available on request.

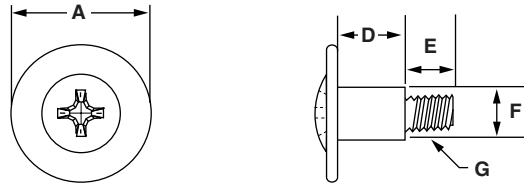
	C-1002	C-1105	C-1100	C-8002	VersaDamp
Grommet Color	Blue	Turquoise	Yellow	Sky Blue	Black
Peak Performance Temp. Range at 1000 Hz	55F-105F (13C-41C)	80F-130F (27C-54C)	95F-145F (35C-63C)	62F-105F (17C-41C)	-40F-122F (-40C-50C)

Fan Mounts



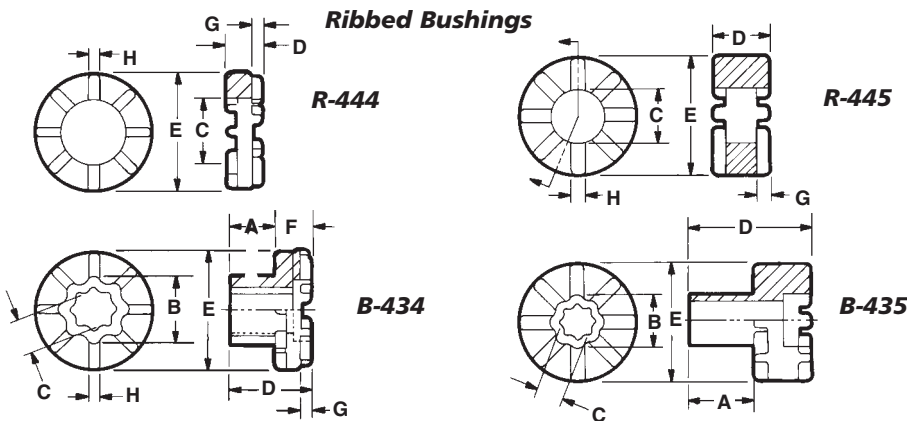
Family	Description	Dimensions (mm)			
ISODAMP/VersaDamp		A Fan Hole Diam.	B Fan Hole Depth	C Plate Thckns.	D Plate Hole Diam.
FAN MOUNTS	F-340	2.5	5.0	.80	2.75
	F-344	4.4	3.0	1.3	4.4
	F-345	3.5	3.8	1.3	3.5
	F-347	4.4	4.5	0.8	4.5

Shoulder Bolts

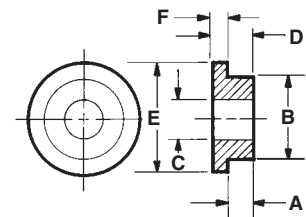


Family	Product		Dimensions (mm)				
Shoulder Bolts		Use With	A Head Diam.	D Shoulder Length	E Thread Length	F Shoulder Diam.	G Thread
SHOULDER BOLTS	SB-4102	G-410	.350	.214	.215-.185	.161	6-32 UNC-2A
	SB-4105	G-410	.350	.214	.150-.126	.161	M3-0.5
	SB-4107	G-410	.350	.214	.215-.185	.161	M3-0.5
	SB-4112	G-411	.500	.300	.215-.185	.196	6-32 UNC-2A
	SB-4114	G-411	.500	.300	.215-.185	.194	M4-0.7
	SB-4118	G-411	.500	.250	.215-.185	.188	6-32 UNC-2A

Ribbed Bushings



Non-ribbed Bushings

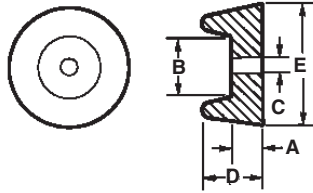


Family	Product	Load (lbs)	Dimensions (inches)							
ISODAMP/VersaDamp		Recommended Maximum	A Shank Height	B Shank Diam.	C Inside Diam.	D Overall Height	E Flange Diam.	F Flange Height	G Rib Height	H Rib Width
BUSHINGS Ribbed	R-444	10.0	n/a	n/a	.460	.250	.813	n/a	.078	.085
	B-434	10.0	.313	.469	.260	.563	.813	.250	.078	.085
	R-445	25.0	n/a	n/a	.457	.520	1.000	n/a	.132	.125
	B-435	25.0	.544	.473	.260	1.060	1.000	.516	.132	.135
Non-Ribbed	B-531	17.0	.120	.360	.189	.175	.500	.055	n/a	n/a
	B-532	40.0	.139	.420	.271	.259	.750	.120	n/a	n/a
	B-533	100.0	.085	.750	.427	.325	1.265	.240	n/a	n/a

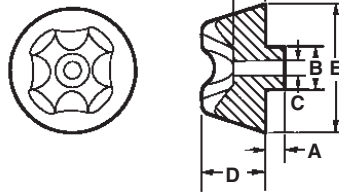
For C-1002 material, indicate "-1" after part number (e.g. G-401-1)
 For C-1105 material, indicate "-2" after the part number (e.g. G-401-2)
 For C-1100 material, indicate "-3" after the part number (e.g. G-401-3)
 For C-8002 material, indicate "-8" after the part number (e.g. G-401-8)
 For VersaDamp material, indicate "-formulation number" after the part number (e.g. G-401-2325)
 Dimensions given here are nominal. Exact specification print available on request.

	C-1002	C-1105	C-1100	C-8002	VersaDamp
Grommet Color	Blue	Turquoise	Yellow	Sky Blue	Black
Peak Performance Temp. Range at 1000 Hz	55F-105F (13C-41C)	80F-130F (27C-54C)	95F-145F (35C-63C)	62F-105F (17C-41C)	-40F-122F (-40C-50C)

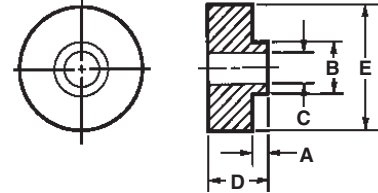
Mounting Feet



Mounting Feet

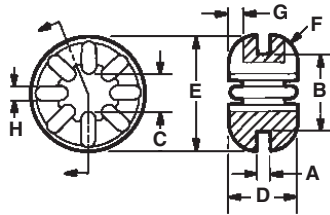


Equipment Mounts

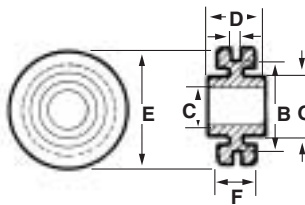


Family	Product	Load (lbs)	Dimensions (inches)						
			A	B	C	D	E	F	
ISODAMP		<i>Recommended Maximum</i>	<i>Bolt Flg. Height</i>	<i>Bolt Flg. Diam.</i>	<i>Inside Diam.</i>	<i>Overall Height</i>	<i>Outside Diam.</i>	<i>Bolt Flg. Height</i>	
	C-1002	MF-1010	15.0	.270	.493	.123	.521	.982	n/a
	MOUNTING FEET	MF-1010PSA	15.0	.270	.493	.123	.521	.982	n/a
			<i>A</i>	<i>B</i>	<i>C</i>	<i>D</i>	<i>E</i>	<i>F</i>	
			<i>Shank Height</i>	<i>Shank Diam.</i>	<i>Inside Diam.</i>	<i>Mount Height</i>	<i>Mount Diam.</i>	<i>Bolt Flg. Height</i>	
C-1002	MOUNTING FEET	L-020	20.0	.215	.500	.194	.755	1.502	.410
		L-021	20.0	n/a	n/a	.194	.755	1.502	.410
		L-030	20.0	.215	.509	.325	.755	1.502	.410
		L-031	20.0	n/a	n/a	.320	.755	1.502	.410
C-1002	EQUIPMENT MOUNTS	ML-4250	70.0	.125	.500	.327	.625	1.172	n/a
		ML-42100	140.0	.188	.750	.443	.820	1.656	n/a
		ML-42200	300.0	.260	1.010	.575	1.007	2.371	n/a
		ML-42500	700.0	.355	1.000	.549	1.385	3.667	n/a

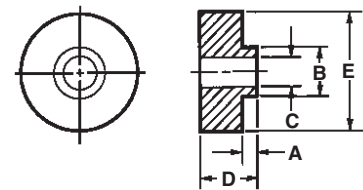
Symmetric, Internally Ribbed



Shear



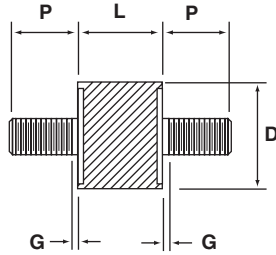
Equipment Mounts



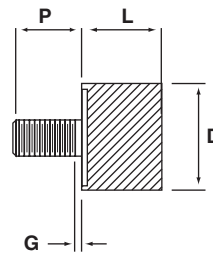
Family	Description	Load (lbs)	Dimensions (inches)							
			A	B	C	D	E	F	G	H
ISOLOSS		<i>Recommended Maximum</i>	<i>Plate Thckns.</i>	<i>Hole Diam.</i>	<i>Inside Diam.</i>	<i>Overall Height</i>	<i>Outside Diam.</i>	<i>Edge Radius</i>	<i>Rib Height</i>	<i>Rib Width</i>
	HD/VL GROMMETS									
Symmetric, Internally Ribbed	G-411-H	6.0	.063	.375	.188	.313	.555	.125	.063	.063
	G-411-V	1.0	.063	.375	.188	.323	.563	.130	.063	.063
			<i>A</i>	<i>B</i>	<i>C</i>	<i>D</i>	<i>E</i>	<i>F</i>	<i>G</i>	<i>H</i>
			<i>Plate Thckns.</i>	<i>Hole Diam.</i>	<i>Inside Diam.</i>	<i>Overall Height</i>	<i>Outside Diam.</i>	<i>Flange Thckns.</i>	<i>Boss Out. Diam.</i>	<i>Rib Width</i>
Shear	G-601-H	2.0	.056	.565	.245	.375	.750	.237	.375	n/a
	G-601-V	0.3	.050	.569	.245	.380	.755	.245	.380	n/a
			<i>A</i>	<i>B</i>	<i>C</i>	<i>D</i>	<i>E</i>	<i>F</i>	<i>G</i>	<i>H</i>
			<i>Shank Height</i>	<i>Shank Diam.</i>	<i>Inside Diam.</i>	<i>Overall Height</i>	<i>Flange Diam.</i>	<i>Flange Thckns.</i>	<i>Boss Out. Diam.</i>	<i>Rib Width</i>
EQUIPMENT MOUNTS	ML-4250-H	70.0	.125	.495	.309	.629	1.169	n/a	n/a	n/a
	ML-4250-V	10.0	.126	.500	.313	.638	1.190	n/a	n/a	n/a

"H" after part number indicates ISOLOSS HD material; "V" after part number indicates ISOLOSS VL material. Dimensions given here are nominal. Exact specification print available on request.

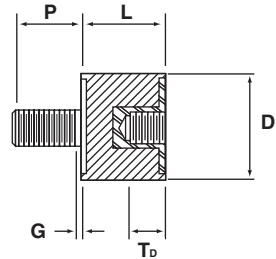
Male-Male Sandwich Mounts



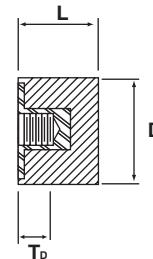
Male-Blank Sandwich Mounts



Male-Female Sandwich Mounts



Female-Blank Sandwich Mounts



Family	Product	Load (lbs)		Dimensions		Metal Insert				
		Maximum Compressive	Maximum Shear	D Diam. (in)	L Length (in)	Type	P Overall Height	G Grip (in)	T _D Depth (in)	
ISOLOSS										
HD/VL SANDWICH MOUNTS	Male-Male	MM-100-UC04-H	4.0	1.5	.275	.320	#4-40	.200	.060	n/a
		MM-100-UC04-V	0.5	0.2	.280	.320	#4-40	.200	.060	n/a
		MM-200-UC06-H	8.0	3.0	.400	.500	#6-32	.375	.060	n/a
		MM-200-UC06-V	1.0	0.4	.405	.500	#6-32	.375	.060	n/a
		MM-200-UC08-H	8.0	3.0	.400	.500	#8-32	.375	.060	n/a
		MM-200-UC08-V	1.0	0.4	.400	.500	#8-32	.375	.060	n/a
		MM-300-UC25-H	20.0	5.0	.615	.625	1/4-20	.500	.100	n/a
		MM-400-UC31-H	50.0	13.0	1.00	.750	5/16-18	.625	.100	n/a
	Male-Blank	MB-100-UC04-H	4.0		.275	.320	#4-40	.200	.060	n/a
		MB-100-UC04-V	0.5		.280	.320	#4-40	.200	.060	n/a
		MB-200-UC06-H	8.0		.400	.500	#6-32	.375	.060	n/a
		MB-200-UC06-V	1.0		.405	.500	#6-32	.375	.060	n/a
		MB-200-UC08-H	8.0		.400	.500	#8-32	.375	.060	n/a
		MB-200-UC08-V	1.0		.405	.500	#8-32	.375	.060	n/a
MB-300-UC25-H		20.0		.615	.625	1/4-20	.500	.100	n/a	
MB-400-UC31-H		50.0		1.00	.750	5/16-18	.625	.100	n/a	
Male-Female	MF-100-UC04-H	2.0	0.8	.275	.320	#4-40	.200	.060	.110	
	MF-100-UC04-V	0.3	0.1	.280	.320	#4-40	.200	.060	.110	
	MF-200-UC06-H	4.0	2.0	.400	.500	#6-32	.375	.060	.160	
	MF-200-UC06-V	0.6	0.3	.405	.500	#6-32	.375	.060	.160	
	MF-200-UC08-H	4.0	2.0	.400	.500	#8-32	.375	.060	.160	
	MF-200-UC08-V	0.6	0.3	.405	.500	#8-32	.375	.060	.160	
	MF-300-UC25-H	12.0	3.5	.615	.625	1/4-20	.500	.100	.260	
	MF-400-UC31-H	45.0	10.0	1.00	.750	5/16-18	.625	.100	.290	
Female-Blank	FB-100-UC04-H	2.0		.275	.320	#4-40	n/a	n/a	.110	
	FB-100-UC04-V	0.3		.280	.320	#4-40	n/a	n/a	.110	
	FB-200-UC06-H	4.0		.400	.500	#6-32	n/a	n/a	.160	
	FB-200-UC06-V	0.6		.405	.500	#6-32	n/a	n/a	.160	
	FB-200-UC08-H	4.0		.400	.500	#8-32	n/a	n/a	.160	
	FB-200-UC08-V	0.6		.405	.500	#8-32	n/a	n/a	.160	
	FB-300-UC25-H	12.0		.615	.625	1/4-20	n/a	n/a	.260	
	FB-400-UC31-H	45.0		1.00	.750	5/16-18	n/a	n/a	.290	

"H" after part number indicates ISOLOSS HD material; "V" after part number indicates ISOLOSS VL material. Dimensions given here are nominal. Exact specification print available on request.