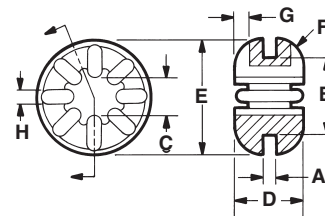


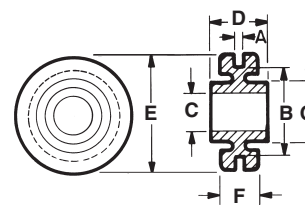
**Symmetric,
Internally Ribbed**



SYMMETRIC, INTERNALLY RIBBED GROMMETS

Part No.	Dynamic Stiffness (lbin)		Load (lb) Recommended Maximum	Dimensions (inches)							
	Axial	Radial		A Plate Thckns.	B Hole Diam.	C Inside Diam.	D Overall Height	E Outside Diam.	F Edge Radius	G Rib Height	H Rib Width
G-411-H	1470	887	6.0	.063	.375	.188	.313	.555	.125	.063	.063
G-411-SL20100	226	110	1.0	.059	.375	.188	.308	.555	.123	.059	.063
G-411-SL25200	318	154	1.0	.059	.375	.188	.308	.555	.123	.059	.063

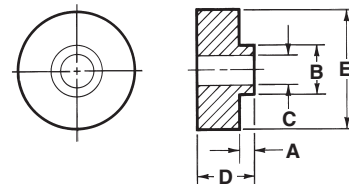
Shear



SHEAR GROMMETS

Part No.	Dynamic Stiffness (lbin)		Load (lb) Recommended Maximum	Dimensions (inches)							
	Axial	Radial		A Plate Thckns.	B Hole Diam.	C Inside Diam.	D Overall Height	E Outside Diam.	F Flange Thckns.	G Boss Out. Diam.	H Rib Width
G-601-H	294	557	2.0	.056	.565	.245	.375	.750	.237	.375	n/a
G-601-SL20100	57	111	.3	.050	.569	.245	.380	.755	.245	.380	n/a
G-601-SL25200	67	131	.3	.050	.569	.245	.380	.755	.245	.380	n/a

Equipment Mounts



EQUIPMENT MOUNTS

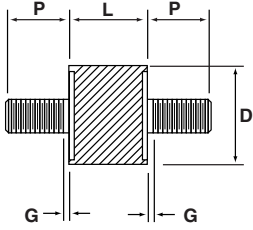
Part No.	Load (lb) Recommended Maximum	Dimensions (inches)							
		A Shank Height	B Shank Diam.	C Inside Diam.	D Overall Height	E Flange Diam.	F Flange Thckns.	G Boss Out. Diam.	H Rib Width
ML-4250-H	70.0	.125	.495	.309	.629	1.169	n/a	n/a	n/a
ML-4250-SL20100	10.0	.126	.500	.313	.625	1.165	n/a	n/a	n/a
ML-4250-SL25200	10.0	.126	.500	.313	.625	1.165	n/a	n/a	n/a

"H" after part number indicates ISOLOSS HD material; "V" after part number indicates ISOLOSS VL material.
Dimensions given here are nominal. Exact specification print available on request.

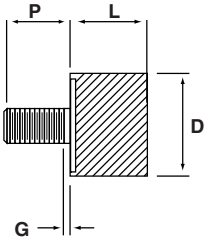
ISOLOSS MOUNTS

MALE-MALE / MALE-BLANK SANDWICH MOUNTS

Male-Male Sandwich Mounts



Male-Blank Sandwich Mounts

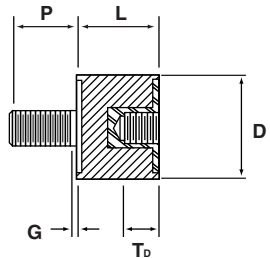


Part No.	Dynamic Stiffness (lbin)		Load (lbs)		Dimensions		Threads			
	Compression	Shear	Max. Compressive	Max. Shear	Diam. (in)	Length (in)	Type	P Overall Height	G Grip (in)	T _D Depth (in)
MM-100-UC04-H	262	59	4.0	1.5	.275	.320	#4-40	.200	.060	n/a
MM-100-UC04-SL20100	126	12	0.5	0.2	.280	.320	#4-40	.200	.060	n/a
MM-100-UC04-SL25200	185	15	0.5	0.2	.280	.320	#4-40	.200	.060	n/a
MM-200-UC06-H	285	74	8.0	3.0	.400	.500	#6-32	.375	.060	n/a
MM-200-UC06-SL20100	133	12	1.0	0.4	.405	.500	#6-32	.375	.060	n/a
MM-200-UC06-SL25200	133	15	1.0	0.4	.405	.500	#6-32	.375	.060	n/a
MM-200-UC08-H	285	74	8.0	3.0	.400	.500	#8-32	.375	.060	n/a
MM-200-UC08-SL20100	108	12	1.0	0.4	.405	.500	#8-32	.375	.060	n/a
MM-200-UC08-SL25200	152	15	1.0	0.4	.405	.500	#8-32	.375	.060	n/a
MM-300-UC25-H	471	120	20.0	5.0	.615	.625	1/4-20	.500	.100	n/a
MM-400-UC31-H	1108	270	50.0	13.0	1.00	.750	5/16-18	.625	.100	n/a
MB-100-UC04-H	262		4.0		.275	.320	#4-40	.200	.060	n/a
MB-100-UC04-SL20100	96	n/a	0.5	n/a	.280	.320	#4-40	.200	.060	n/a
MB-100-UC04-SL25200	132	n/a	0.5	n/a	.280	.320	#4-40	.200	.060	n/a
MB-200-UC06-H	285		8.0		.400	.500	#6-32	.375	.060	n/a
MB-200-UC06-SL20100	116	n/a	1.0	n/a	.405	.500	#6-32	.375	.060	n/a
MB-200-UC06-SL25200	133	n/a	1.0	n/a	.405	.500	#6-32	.375	.060	n/a
MB-200-UC08-H	285		8.0		.400	.500	#8-32	.375	.060	n/a
MB-200-UC08-SL20100	101	n/a	1.0	n/a	.405	.500	#8-32	.375	.060	n/a
MB-200-UC08-SL25200	139	n/a	1.0	n/a	.405	.500	#8-32	.375	.060	n/a
MB-300-UC25-H	471		20.0		.615	.625	1/4-20	.500	.100	n/a
MB-400-UC31-H	1108		50.0		1.00	.750	5/16-18	.625	.100	n/a

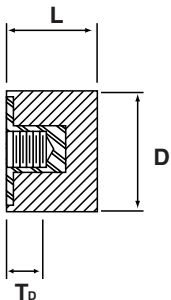
INSTALLATION HINTS SEE PAGE 17

MALE-FEMALE / FEMALE-BLANK SANDWICH MOUNTS

Male-Female Sandwich Mounts



Female-Blank Sandwich Mounts



Part No.	Dynamic Stiffness (lbin)		Load (lbs)		Dimensions		Threads			
	Compression	Shear	Max. Compressive	Max. Shear	Diam. (in)	Length (in)	Type	P Overall Height	G Grip (in)	T _D Depth (in)
MF-100-UC04-H	765	148	2.0	0.8	.275	.320	#4-40	.200	.060	.110
MF-100-UC04-SL20100	205	20	0.3	0.1	.280	.320	#4-40	.200	.060	.110
MF-100-UC04-SL25200	154	22	0.3	0.1	.280	.320	#4-40	.200	.060	.110
MF-200-UC06-H	1049	208	4.0	2.0	.400	.500	#6-32	.375	.060	.160
MF-200-UC06-SL20100	242	19	0.6	0.3	.405	.500	#6-32	.375	.060	.160
MF-200-UC06-SL25200	428	22	0.6	0.3	.405	.500	#6-32	.375	.060	.160
MF-200-UC08-H	1049	208	4.0	2.0	.400	.500	#8-32	.375	.060	.160
MF-200-UC08-SL20100	242	18	0.6	0.3	.405	.500	#8-32	.375	.060	.160
MF-200-UC08-SL25200	270	22	0.6	0.3	.405	.500	#8-32	.375	.060	.160
MF-300-UC25-H	2350	385	12.0	3.5	.615	.625	1/4-20	.500	.100	.260
MF-400-UC31-H	6727	896	45.0	10.0	1.00	.750	5/16-18	.625	.100	.290
FB-100-UC04-H	765		2.0		.275	.320	#4-40	n/a	n/a	.110
FB-100-UC04-SL20100	159	n/a	0.3	n/a	.280	.320	#4-40	n/a	n/a	.110
FB-100-UC04-SL25200	169	n/a	0.3	n/a	.280	.320	#4-40	n/a	n/a	.110
FB-200-UC06-H	1049		4.0		.400	.500	#6-32	n/a	n/a	.160
FB-200-UC06-SL20100	228	n/a	0.6	n/a	.405	.500	#6-32	n/a	n/a	.160
FB-200-UC06-SL25200	123	n/a	0.6	n/a	.405	.500	#6-32	n/a	n/a	.160
FB-200-UC08-H	1049		4.0		.400	.500	#8-32	n/a	n/a	.160
FB-200-UC08-SL20100	186	n/a	0.6	n/a	.405	.500	#8-32	n/a	n/a	.160
FB-200-UC08-SL25200	198	n/a	0.6	n/a	.405	.500	#8-32	n/a	n/a	.160
FB-300-UC25-H	2530		12.0		.615	.625	1/4-20	n/a	n/a	.260
FB-400-UC31-H	6727		45.0		1.00	.750	5/16-18	n/a	n/a	.290

"H" after part number indicates ISOLOSS HD material.

Dimensions given here are nominal. Exact specification print available on request.



Aearo Technologies - a 3M company

www.earshockandvibe.com www.earsc.com
E-mail: solutions@earsc.com

Toll-free hotline
(877) EAR-IDEA
(327-4332)

7911 Zionsville Road

Indianapolis, IN 46268

Phone (317) 692-1111

Fax (317) 692-3111

650 Dawson Drive

Newark, DE 19713

Phone (302) 738-6800

Fax (302) 738-6811