

Ribbed

INSTALLATION HINTS
SEE PAGE 16

Symmetric

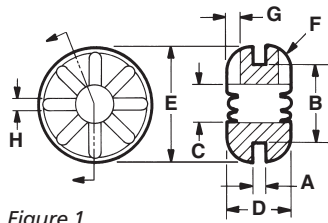


Figure 1

Symmetric, Internally Ribbed

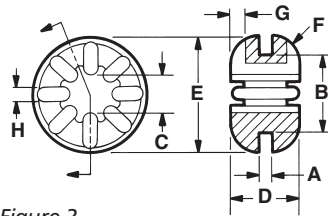
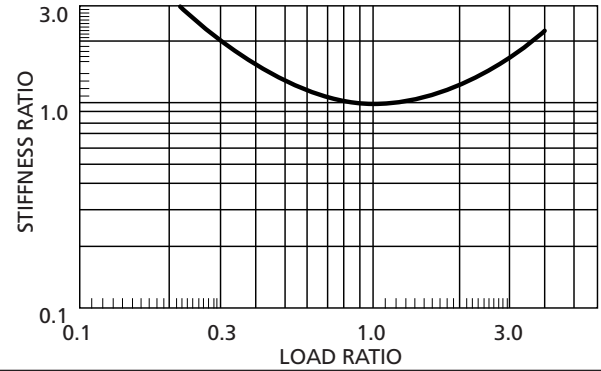
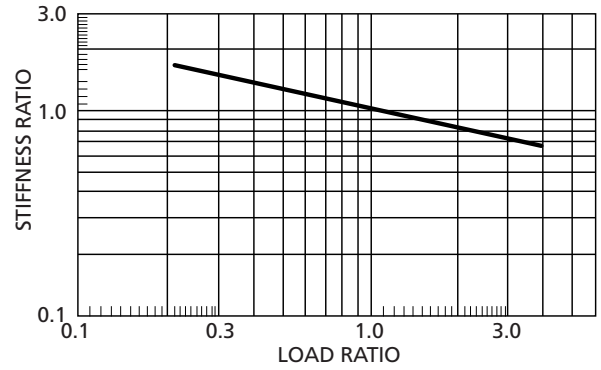


Figure 2

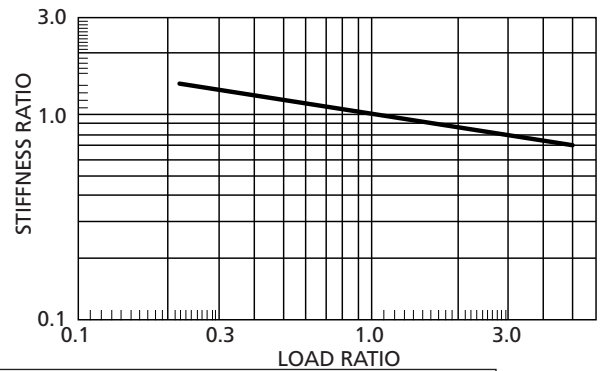
PERFORMANCE GRAPH



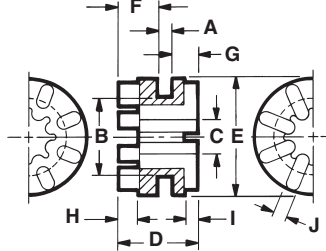
SYMMETRIC / SYMMETRIC INTERNALLY RIBBED

Figure No.	Part No.	Axial		Radial		Load (lb) Recommended Maximum	Dimensions (inches)							
		Load Factor (lb)	Stiffness Factor (lb/in)	Load Factor (lb)	Stiffness Factor (lb/in)		A Plate Thckns.	B Hole Diam.	C Inside Diam.	D Overall Height	E Outside Diam.	F Edge Radius	G Rib Height	H Rib Width
Figure 1	G-401	1.6	2091	0.9	6341	6.0	.063	.375	.224	.313	.563	.125	.063	.063
Figure 1	G-402	1.6	5130	1.8	9719	6.0	.125	.375	.226	.375	.563	.125	.063	.063
Figure 1	G-403	1.6	3361	0.9	7048	6.0	.063	.375	.276	.313	.625	.125	.063	.063
Figure 1	G-404	1.6	8200	1.8	9836	6.0	.125	.375	.281	.375	.625	.125	.063	.063
Figure 2	G-410	1.7	1988	0.5	2683	3.0	.057	.250	.158	.230	.379	.050	.040	.050
Figure 2	G-411	1.8	1911	0.9	1153	6.0	.063	.375	.188	.323	.563	.130	.063	.063
Figure 2	G-412	1.7	1988	0.5	2683	3.0	.031	.250	.158	.230	.379	.050	.040	.050
Figure 2	G-414	1.8	1911	0.9	1153	6.0	.043	.375	.188	.323	.563	.130	.063	.063

PERFORMANCE GRAPH



Asymmetric



ASYMMETRIC

Part No.	Axial		Radial		Load (lb) Recommended Maximum	Dimensions (inches)							
	Load Factor (lb)	Stiffness Factor (lb/in)	Load Factor (lb)	Stiffness Factor (lb/in)		A Plate Thckns.	B Hole Diam.	C Inside Diam.	D Overall Height	E Outside Diam.	F / G Lg./Sm. Flg. Height	H / I Lg./Sm. Rib Height	J Rib Width
G-430	1.2	3724	0.8	2704	5.0	.055	.375	.180	.395	.560	.210/.130	.100/.065	.062
G-431	1.8	3789	1.2	2610	8.0	.055	.560	.172	.390	.750	.210/.125	.100/.065	.062

For C-1002 material, indicate "-1" after part number (e.g. G-401-1)
 For C-1105 material, indicate "-2" after the part number (e.g. G-401-2)
 For C-1100 material, indicate "-3" after the part number (e.g. G-401-3)
 For C-8002 material, indicate "-8" after the part number (e.g. G-401-8)
 For VersaDamp material, indicate "-formulation number" after the part number (e.g. G-401-2325)
 Dimensions given here are nominal. Exact specification print available on request.

	C-1002	C-1105	C-1100	C-8002	VersaDamp
Grommet Color	Blue	Turquoise	Yellow	Sky Blue	Black
Peak Performance Temp. Range at 1000 Hz	55F-105F (13C-41C)	80F-130F (27C-54C)	95F-145F (35C-63C)	62F-105F (17C-41C)	-40F-122F (-40C-50C)

*Refer to page 19 for additional temperature data.



Aearo Technologies - a 3M company

www.earshockandvibe.com www.earsc.com
E-mail: solutions@earsc.com

Toll-free hotline
(877) EAR-IDEA
(327-4332)

7911 Zionsville Road
650 Dawson Drive

Indianapolis, IN 46268
Newark, DE 19713

Phone (317) 692-1111
Phone (302) 738-6800

Fax (317) 692-3111
Fax (302) 738-6811

ISODAMP & VERSADAMP GROMMETS

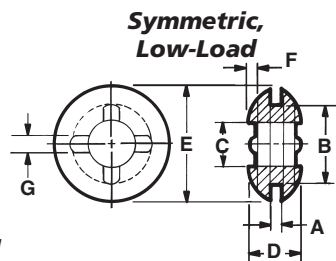


Figure 1

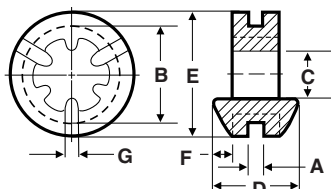


Figure 2

SYMMETRIC, LOW-LOAD

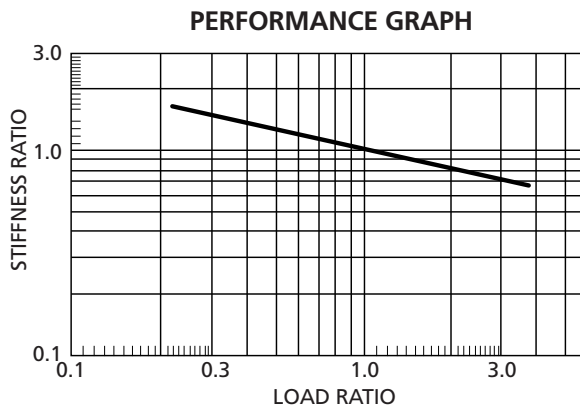
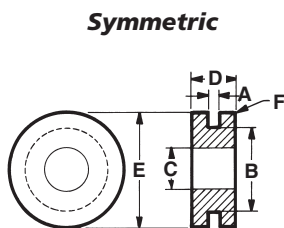


Figure No.	Part No.	Axial		Radial		Load (lb) Recommended Maximum	Dimensions (inches)						
		Load Factor (lb)	Stiffness Factor (lb/in)	Load Factor (lb)	Stiffness Factor (lb/in)		A Plate Thckns.	B Hole Diam.	C Inside Diam.	D Overall Height	E Outside Diam.	F Rib Height	G Rib Width
Figure 1	G-427	0.8	725	0.7	3475	1.5	.049	.312	.180	.194	.440	.025	.056
Figure 2	G-461	0.2	381	0.2	392	0.3	.037	.298	.157	.271	.393	.063	.051
Figure 2	G-462	0.2	381	0.2	392	0.3	.047	.304	.153	.276	.393	.063	.051

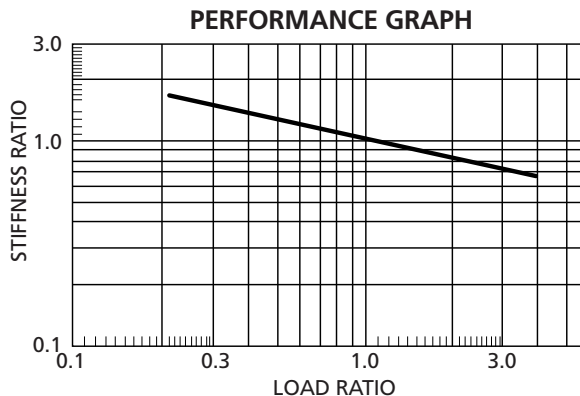
Non-Ribbed

INSTALLATION HINTS

SEE PAGE 16



Symmetric



SYMMETRIC

Part No.	Axial		Radial		Load (lb) Recommended Maximum	Dimensions (inches)							
	Load Factor (lb)	Stiffness Factor (lb/in)	Load Factor (lb)	Stiffness Factor (lb/in)		A Plate Thckns.	B Hole Diam.	C Inside Diam.	D Overall Height	E Outside Diam.	F Edge Radius	G Lg. Flg. Height	H Sm. Flg. Height
G-501	4.2	17983	0.5	40450	17.0	.060	.360	.187	.120	.500	n/a	n/a	n/a
G-502	4.3	12985	0.8	10640	17.0	.063	.338	.182	.182	.500	n/a	n/a	n/a
G-503	2.1	6640	0.5	14495	10.0	.054	.244	.190	.306	.385	.020	n/a	n/a
G-504	3.0	12744	0.7	9170	13.0	.063	.309	.183	.187	.437	n/a	n/a	n/a
G-505	4.3	14745	0.8	15099	17.0	.062	.375	.190	.175	.500	n/a	n/a	n/a
G-506	3.3	12805	0.8	7252	14.0	.043	.319	.177	.220	.460	.020	n/a	n/a
G-507	9.0	7775	1.4	9739	40.0	.070	.503	.277	.396	.751	.050	n/a	n/a

For C-1002 material, indicate "-1" after part number (e.g. G-401-1)
 For C-1105 material, indicate "-2" after the part number (e.g. G-401-2)
 For C-1100 material, indicate "-3" after the part number (e.g. G-401-3)
 For C-8002 material, indicate "-8" after the part number (e.g. G-401-8)
 For VersaDamp material, indicate "-formulation number" after the part number (e.g. G-401-2325)

Dimensions given here are nominal. Exact specification print available on request.

	C-1002	C-1105	C-1100	C-8002	VersaDamp
Grommet Color	Blue	Turquoise	Yellow	Sky Blue	Black
Peak Performance Temp. Range at 1000 Hz	55F-105F (13C-41C)	80F-130F (27C-54C)	95F-145F (35C-63C)	62F-105F (17C-41C)	-40F-122F (-40C-50C)

*Refer to page 19 for additional temperature data.



Aearo Technologies - a 3M company

www.earshockandvibe.com www.earsc.com
 E-mail: solutions@earsc.com

Toll-free hotline
 (877) EAR-IDEA
 (327-4332)

7911 Zionville Road
 650 Dawson Drive

Indianapolis, IN 46268
 Newark, DE 19713

Phone (317) 692-1111
 Phone (302) 738-6800

Fax (317) 692-3111
 Fax (302) 738-6811

Non-ribbed

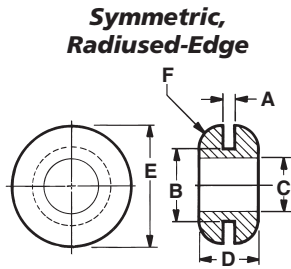


Figure 1

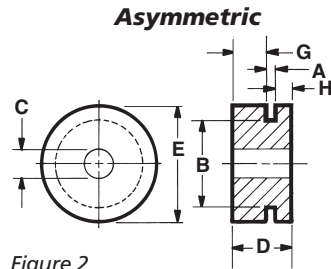
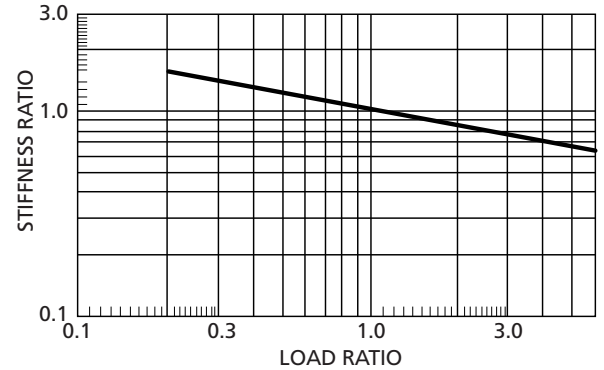
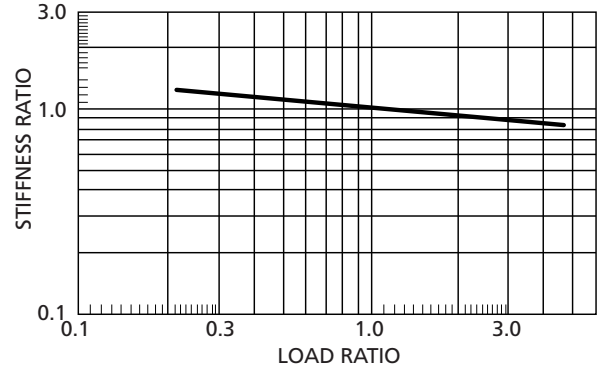


Figure 2

PERFORMANCE GRAPH

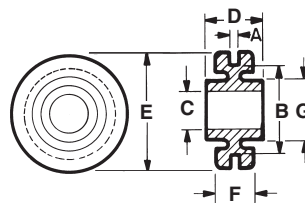


SYMMETRIC, RADIUS-EDGE / ASYMMETRIC

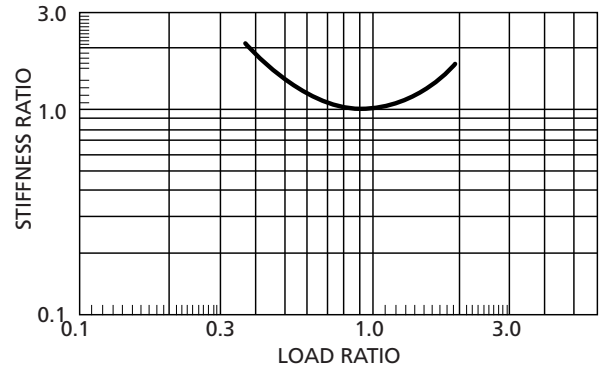
Figure No.	Part No.	Axial		Radial		Load (lb) Recommended Maximum	Dimensions (inches)							
		Load Factor (lb)	Stiffness Factor (lb/in)	Load Factor (lb)	Stiffness Factor (lb/in)		A Plate Thckns.	B Hole Diam.	C Inside Diam.	D Overall Height	E Outside Diam.	F Edge Radius	G Lg. Flg. Height	H Sm. Flg. Height
Figure 1	G-521	5.3	5593	0.9	7470	25.0	.062	.375	.270	.325	.625	.125	n/a	n/a
Figure 2	G-511	9.8	8467	1.4	5159	40.0	.063	.562	.180	.395	.753	n/a	.214	.118
Figure 2	G-512	6.5	5844	1.9	6951	26.0	.115	.437	.245	.620	.625	n/a	.380	.125
Figure 2	G-513	6.6	11465	1.4	12687	40.0	.078	.500	.304	.500	.750	n/a	.290	.132

INSTALLATION HINTS
SEE PAGE 16

Shear



PERFORMANCE GRAPH



SHEAR

Part No.	Axial		Radial		Load (lb) Recommended Maximum	Dimensions (inches)						
	Load Factor (lb)	Stiffness Factor (lb/in)	Load Factor (lb)	Stiffness Factor (lb/in)		A Plate Thckns.	B Hole Diam.	C Inside Diam.	D Overall Height	E Outside Diam.	F Flange Thckns.	G Boss Out. Diam.
G-601	1.8	382	2.1	721	2.0	.056	.560	.248	.375	.750	n/a	n/a

For C-1002 material, indicate "-1" after part number (e.g. G-401-1)
 For C-1105 material, indicate "-2" after the part number (e.g. G-401-2)
 For C-1100 material, indicate "-3" after the part number (e.g. G-401-3)
 For C-8002 material, indicate "-8" after the part number (e.g. G-401-8)
 For VersaDamp material, indicate "-formulation number" after the part number (e.g. G-401-2325)
 Dimensions given here are nominal. Exact specification print available on request.

	C-1002	C-1105	C-1100	C-8002	VersaDamp
Grommet Color	Blue	Turquoise	Yellow	Sky Blue	Black
Peak Performance Temp. Range at 1000 Hz	55F-105F (13C-41C)	80F-130F (27C-54C)	95F-145F (35C-63C)	62F-105F (17C-41C)	-40F-122F (-40C-50C)

*Refer to page 19 for additional temperature data.



Aearo Technologies - a 3M company

www.earshockandvibe.com www.earsc.com
E-mail: solutions@earsc.com

Toll-free hotline (877) EAR-IDEA (327-4332)

7911 Zionsville Road
650 Dawson Drive

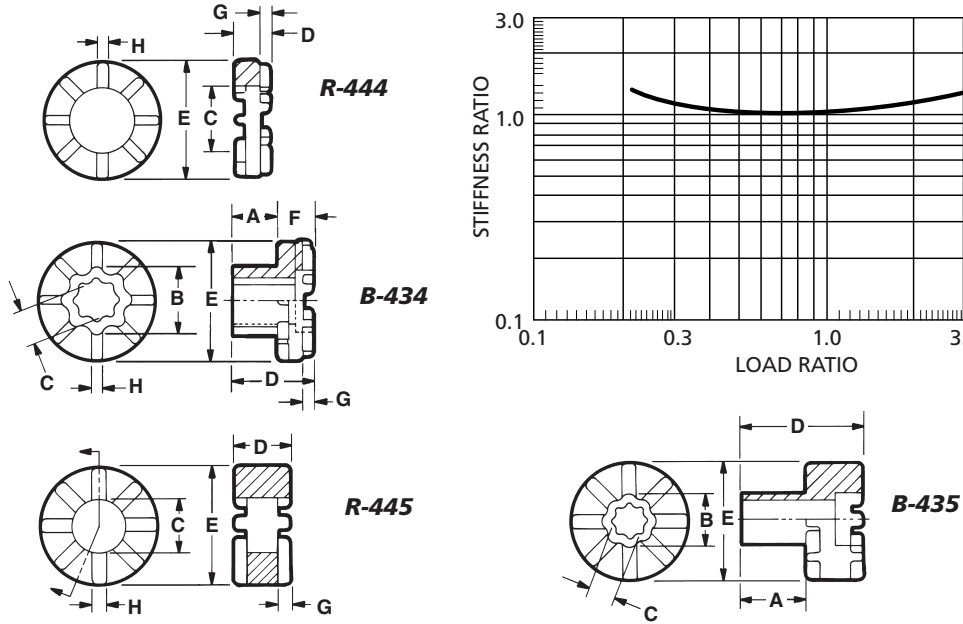
Indianapolis, IN 46268
Newark, DE 19713

Phone (317) 692-1111
Phone (302) 738-6800

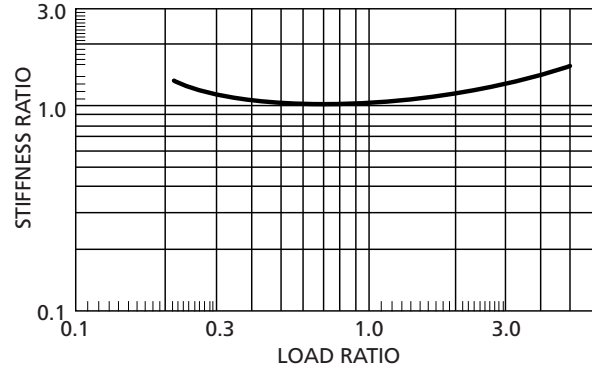
Fax (317) 692-3111
Fax (302) 738-6811

Ribbed

Ribbed Bushings



PERFORMANCE GRAPH



Part No.	Axial*		Radial*		Load (lb) Recommended Maximum	Dimensions (inches)							
	Load Factor (lb)	Stiffness Factor (lb/in)	Load Factor (lb)	Stiffness Factor (lb/in)		A Shank Height	B Shank Diam.	C Inside Diam.	D Overall Height	E Flange Diam.	F Flange Height	G Rib Height	H Rib Width
R-444	2.1	1192	1.5	1095	10.0	n/a	n/a	.460	.250	.813	n/a	.078	.085
B-434	2.1	1192	1.5	1095	10.0	.313	.469	.260	.563	.813	.250	.078	.085
R-445	6.3	650	2.5	1000	25.0	n/a	n/a	.457	.520	1.000	n/a	.132	.125
B-435	6.3	650	2.5	1000	25.0	.544	.473	.260	1.060	1.000	.516	.132	.135

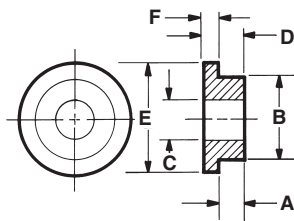
* Normalized data using rings and bushings together

INSTALLATION HINTS

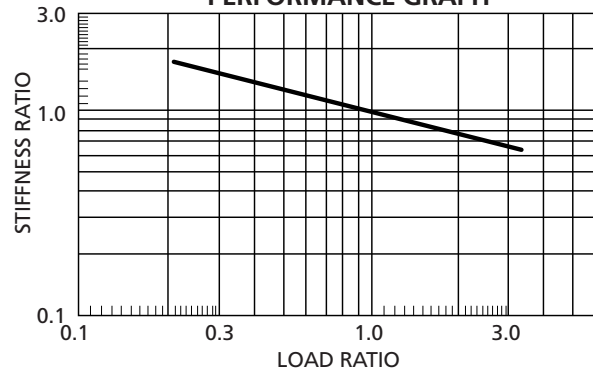
SEE PAGE 16

Non-ribbed

Non-ribbed Bushings



PERFORMANCE GRAPH



Part No.	Axial		Radial		Load (lb) Recommended Maximum	Dimensions (inches)							
	Load Factor (lb)	Stiffness Factor (lb/in)	Load Factor (lb)	Stiffness Factor (lb/in)		A Shank Height	B Shank Diam.	C Inside Diam.	D Overall Height	E Flange Diam.	F Flange Height	G Rib Height	H Rib Width
B-531	4.1	20235	3.5	15575	17.0	.120	.360	.189	.175	.500	.055	n/a	n/a
B-532	9.5	30725	4.2	20772	40.0	.139	.420	.271	.259	.750	.120	n/a	n/a
B-533	28.5	30500	5.0	11500	100.0	.085	.750	.427	.325	1.265	.240	n/a	n/a

For C-1002 material, indicate "-1" after part number (e.g. G-401-1)
 For C-1105 material, indicate "-2" after the part number (e.g. G-401-2)
 For C-1100 material, indicate "-3" after the part number (e.g. G-401-3)
 For C-8002 material, indicate "-8" after the part number (e.g. G-401-8)
 For VersaDamp material, indicate "-formulation number" after the part number (e.g. G-401-2325)
 Dimensions given here are nominal. Exact specification print available on request.

	C-1002	C-1105	C-1100	C-8002	VersaDamp
Grommet Color	Blue	Turquoise	Yellow	Sky Blue	Black
Peak Performance Temp.	55F-105F	80F-130F	95F-145F	62F-105F	-40F-122F
Range at 1000 Hz	(13C-41C)	(27C-54C)	(35C-63C)	(17C-41C)	(-40C-50C)

*Refer to page 19 for additional temperature data.



Acara Technologies - a 3M company

www.earshockandvibe.com www.earsc.com
 E-mail: solutions@earsc.com

Toll-free hotline
 (877) EAR-IDEA
 (327-4332)

7911 Zionville Road
 650 Dawson Drive

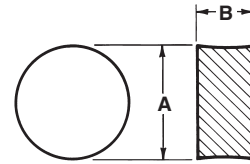
Indianapolis, IN 46268
 Newark, DE 19713

Phone (317) 692-1111
 Phone (302) 738-6800

Fax (317) 692-3111
 Fax (302) 738-6811

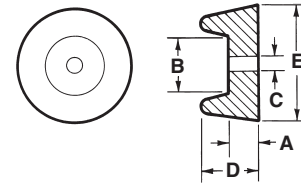
ISODAMP EQUIPMENT MOUNTS

C-1002 MOUNTING PADS



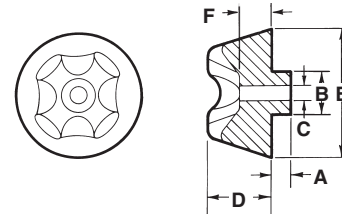
Part No.	Load (lb) Recommended Maximum	Dimensions (inches)					
		A Diam.	B Overall Height	C Inside Diam.	D Overall Height	E Outside Diam.	F Bolt Flg. Height
MP-506	15.0	.500	.060	n/a	n/a	n/a	n/a
MP-512	15.0	.500	.125	n/a	n/a	n/a	n/a
MP-725	30.0	.743	.260	n/a	n/a	n/a	n/a
MP-1025	30.0	0.98	.240	n/a	n/a	n/a	n/a

C-1002 MOUNTING FEET



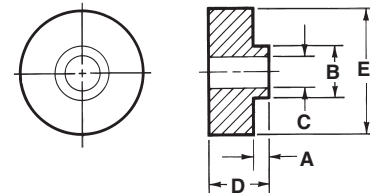
Part No.	Load (lb) Recommended Maximum	Dimensions (inches)					
		A Bolt Flg. Height	B Bolt Flg. Diam.	C Inside Diam.	D Overall Height	E Outside Diam.	F Bolt Flg. Height
MF-1010	15.0	.270	.493	.123	.521	.982	n/a
MF-1010PSA	15.0	.270	.493	.123	.521	.982	n/a

C-1002 MOUNTING FEET



Part No.	Load (lb) Recommended Maximum	Dimensions (inches)					
		A Shank Height	B Shank Diam.	C Inside Diam.	D Mount Height	E Mount Diam.	F Bolt Flg. Height
L-020	20.0	.215	.500	.194	.755	1.502	.410
L-021	20.0	n/a	n/a	.194	.755	1.502	.410
L-030	20.0	.215	.509	.325	.755	1.502	.410
L-031	20.0	n/a	n/a	.320	.755	1.502	.410

C-1002 EQUIPMENT MOUNTS



Part No.	Load (lb) Recommended Maximum	Dimensions (inches)					
		A Shank Diam.	B Shank Diam.	C Inside Diam.	D Mount Height	E Mount Diam.	F Bolt Flg. Height
ML-4250	70.0	.125	.500	.327	.625	1.172	n/a
ML-42100	140.0	.188	.750	.443	.820	1.656	n/a
ML-42200	300.0	.260	1.010	.575	1.007	2.371	n/a
ML-42500	700.0	.355	1.000	.549	1.385	3.667	n/a

Dimensions given here are nominal. Exact specification print available on request.



Aearo Technologies - a 3M company

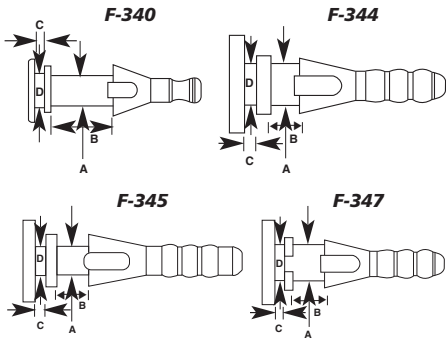
www.earshockandvibe.com www.earsc.com
E-mail: solutions@earsc.com

Toll-free hotline
(877) EAR-IDEA
(327-4332)

7911 Zionsville Road Indianapolis, IN 46268
650 Dawson Drive Newark, DE 19713

Phone (317) 692-1111 Fax (317) 692-3111
Phone (302) 738-6800 Fax (302) 738-6811

ISODAMP FAN MOUNTS



Part No.	Dimensions (mm)				Suggested Fan Sizes (mm)	
	A Fan Hole Diam	B Fan Hole Depth	C Plate Thickness	D Plate Hole Diam	Flange Thickness	Hole Diameter
F-340	2.5	5.0	.80	2.75	4.5-5.5	2.5-3.5
F-344	4.4	3.0	1.3	4.4	2.5-3.5	3.8-4.7
F-345	3.5	3.8	1.3	3.5	3.3-4.3	3.9-5.3
F-347	4.4	4.5	0.8	4.5	3.9-5.0	3.7-4.7

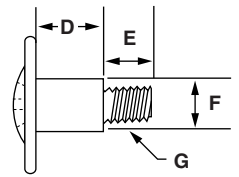
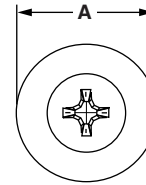
INSTALLATION HINTS

SEE PAGE 16 & 17

SHOULDER BOLTS

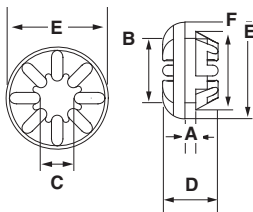
Material: low-carbon steel with zinc chromate coating

Part No.	Grommet	Dimensions (inches)			
		A Head ± .020	D Shoulder Length ± .005	F Shoulder ± .0025	G Thread
SB-4102	G-410	.350	.214	.161	6-32 UNC-2A
SB-4105	G-410	.350	.214	.161	M3-0.5
SB-4107	G-410	.350	.214 <td .161	M3-0.5	
SB-4112	G-411	.500	.300	.196	6-32 UNC-2A
SB-4114	G-411	.500	.300	.194	M4-0.7
SB-4118	G-411	.500	.250	.188	6-32 UNC-2A

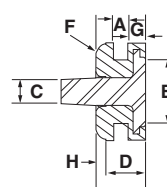
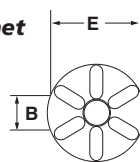


ISODAMP & VERSADAMP ISOLATORS

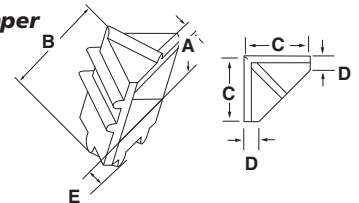
Plug Grommet



Pin Grommet



Corner Bumper



Family	Product	Dimensions (inches)					
		A Plate Thckns.	B Hole Diam.	C Inside Diam.	D Overall Height	E Outside Diam.	F Snap-fit Diam.
ISODAMP/VersaDamp	P-410	.057	.250	.158	.255	.379	.344
	P-411	.063	.375	.188	.323	.563	.457
	P-415	.039	.250	.158	.255	.379	.365

Dimensions (mm)

Family	Product	A	B	C	D	E	F	G	H
		Plate Thckns.	Hole Diam.	Pin Diam.	Grommet Height	Outside Diam.	Edge radius.	Lg Flg. Height	Sm Flg. Height
PIN GROMMETS	PG-100	1.5	6.4	2.5	5.0	9.8	1.27	1.75	1.75

Dimensions (mm)

Family	Product	A	B	C	D	E	F
		Drive Thckns.	Bumper Height	Bumper Length	Side Wall Thckns.	Bottom Wall Thckns.	Top Wall Thckns.
CORNER BUMPERS	CB-100	5.0	9.75	6.00	1.5	1.5	3.25
	CB-101	5.0	8.00	6.75	1.5	1.5	1.50

For C-1002 material, indicate "-1" after part number (e.g. G-401-1)
 For C-1105 material, indicate "-2" after the part number (e.g. G-401-2)
 For C-1100 material, indicate "-3" after the part number (e.g. G-401-3)
 For C-8002 material, indicate "-8" after the part number (e.g. G-401-8)
 For VersaDamp material, indicate "formulation number" after the part number (e.g. G-401-2325)

Dimensions given here are nominal. Exact specification print available on request.

	C-1002	C-1105	C-1100	C-8002	VersaDamp
Grommet Color	Blue	Turquoise	Yellow	Sky Blue	Black
Peak Performance Temp. Range at 1000 Hz	55F-105F (13C-41C)	80F-130F (27C-54C)	95F-145F (35C-63C)	62F-105F (17C-41C)	-40F-122F (-40C-50C)

*Refer to page 19 for additional temperature data.



Aearo Technologies • a 3M company

www.earshockandvibe.com www.earsc.com
 E-mail: solutions@earsc.com

Toll-free hotline
 (877) EAR-IDEA
 (327-4332)

7911 Zionville Road
 650 Dawson Drive

Indianapolis, IN 46268
 Newark, DE 19713

Phone (317) 692-1111
 Phone (302) 738-6800

Fax (317) 692-3111
 Fax (302) 738-6811